

Ruby Dooby Rambleside

Sunday 14th September 2014

The Rambleside covers 4 miles and, with the exception of one short section, which it may be possible to bypass, is over fairly gentle terrain- mostly road or good tracks.

This walk is pleasant in all but the foulest weather (rain always looks worse from the inside looking out). Obviously check the weather forecast and dress appropriately. It could be cold and wet. It could be sunny and glorious. Fingers crossed! Regarding footwear, other than in wet conditions, trainers will probably be ok. Not stillets.

Meet in the large Rydal Road car park on the north side of Ambleside on the A591. It is on the left hand side shortly after the road system becomes two-way and just beyond the famous Bridge House.

Don't forget to pay!!!!!!!!!!!!



Look for DG10 0HX, our dark blue Yeti containing the butties!



Leave the car park by the footbridge back to the A591 and turn right.



Continue past the Bridge House and take the first road on the right (into the one way system with traffic coming towards you).



Stay on the right hand footpath. Immediately after passing Zefferelli's restaurant and cinema there is a road coming from the right across which you can see a sign for Rothay Park and Loughrigg.

Cross to this and go down the road between the sign and the chip shop, marked as a No Through Road. This takes you down to the church.



Do not enter the church grounds, instead continue along the road keeping the church on your left.



On entering Rothay Park carry on straight ahead on a tarmac path.



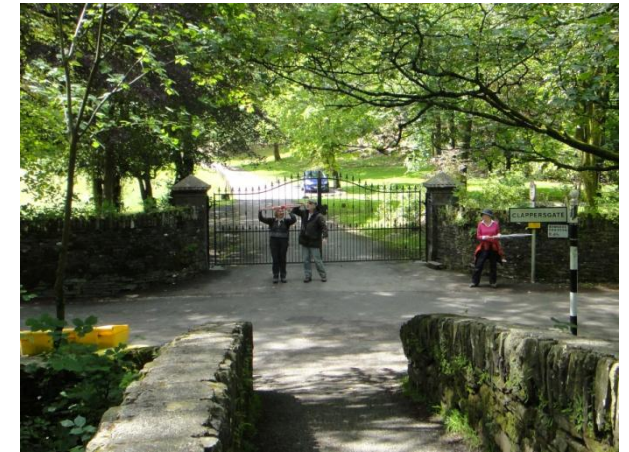
The path bends right, passing a modern interpretation of a stone circle beyond which is a bridge over a small stream.



Soon you will reach a much larger, stone bridge across the River Rothay.



Cross and turn right onto a minor road.



Continue along this road until you reach a junction immediately before a stone bridge over the river.



Do not cross the bridge- instead take the left hand road which continues alongside the river.

When you reach the entrance to Cote Howe (on your RHS) you have a decision to make.



You ought to carry on up the hill but it is quite steep so if you are feeling naughty and want to avoid the hill, you will probably be able to pass through the Cote Howe grounds, past its cafe to a gate through which you pass and turn right to rejoin the "official" route at the bridge over the river.

The hill is steepish but not long. When you see a footpath sign on your right hand side turn right through the gate.



Descend to reach a kissing gate.



Pass through, continue down to the river and turn right



Head to the bridge where you will be joined by those who cheated via Cote Howe.



Go across the bridge over the river and climb up the short distance to the A591.

Here you need to cross the road but take great care, the traffic could be quite heavy.



Once over the road, turn right, heading back on the pavement alongside the road in the Ambleside direction.

Very shortly on your left you will see a metal gate with a National Trust plaque telling you that it is the entrance to Dora's Field (Wordsworth's host of golden daffodils but not today). Enter.



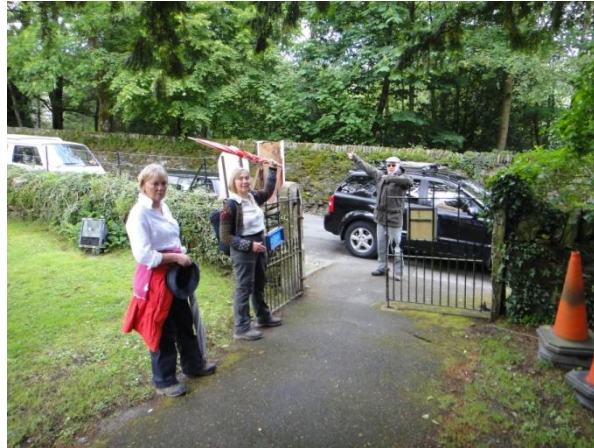
Gently climb up the path taking the first permissible opportunity to turn right towards the church.



Enter the Church Yard by the metal gate and pass round the front of the church.



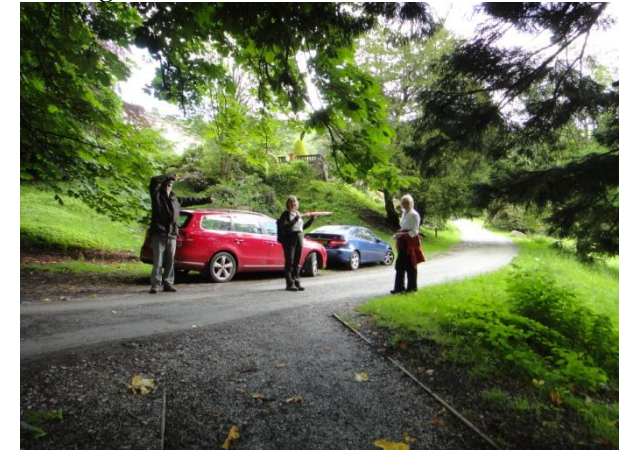
At the gate at the far side of the church yard turn left.



Walk up the hill to a pillared gate alongside a "Welcome to Rydal Hall" sign. Enter.



Climb the path a short distance till you come to a tarmac estate road where you turn right.



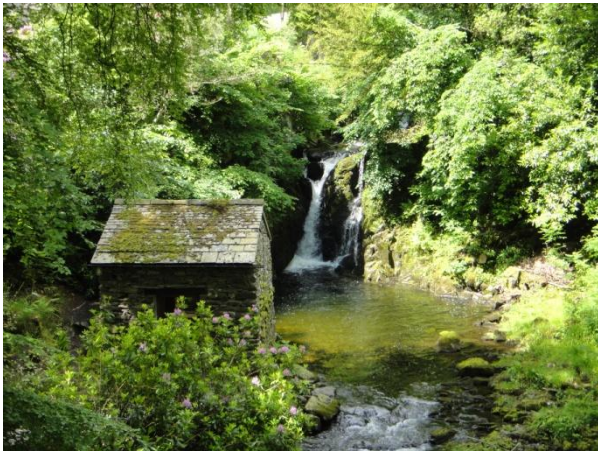
Set high on your left is Rydal Hall. If you want to look round its formal gardens (recommended) climb the fine steps on your left.



Wander round then return to the steps and turn left, i.e. continuing the direction from which you arrived.

On your right hand side you will soon see an area with some strange statues and carvings. Explore if you wish then carry on along the estate road to a bridge.

Stop at the bridge to view the waterfall on your left.



The stone built building in front of the falls is called The Grot. A sign tells you about its history.

Carry on across the bridge and through a gateway.



Ignore tracks to the left and right but once across this junction look to your right to find where Dinah and Alan have managed to commandeer places for the picnic.



Once refreshed, return to the track and continue in the same direction, away from the hall.



Eventually this track will bring you to a gateway which you pass through and turn left along the A591.



Cross the road and return to Ambleside. It is a bit under half a mile to the Rydal Road Car Park.

